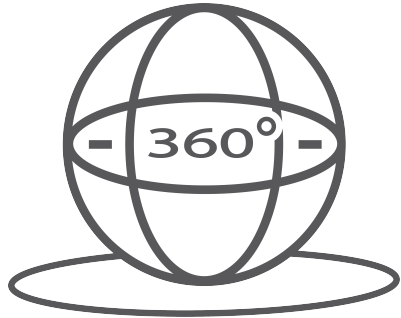
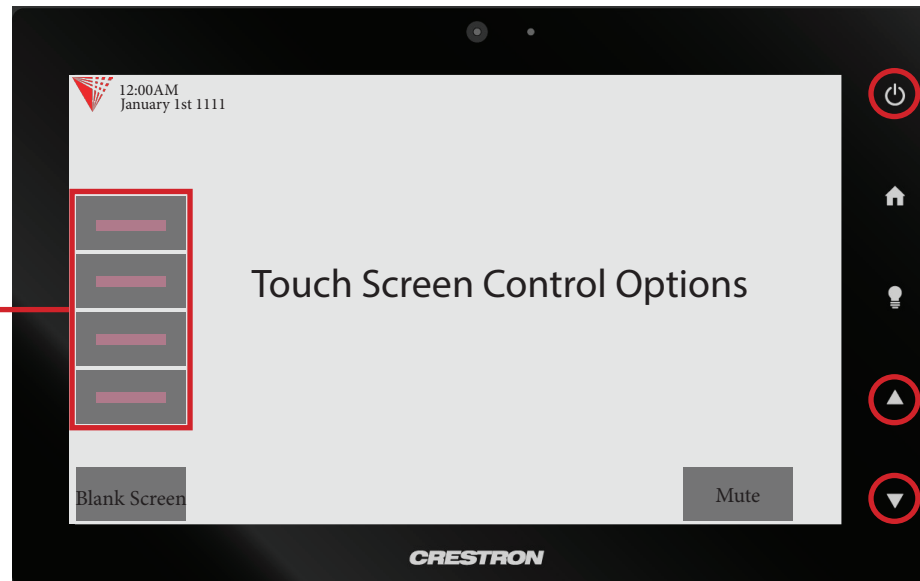


# ILLINOIS TECH



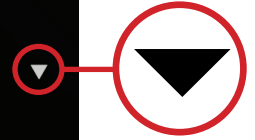
Click here for 360° Image of Classroom



Power On/Off



Volume Up/Down



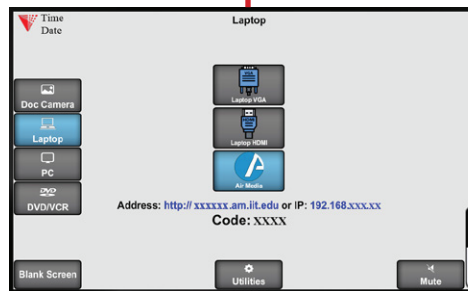
## Input Options



### Document Camera



Touch the Doc Camera button to display images from the document camera onto the projector screen.

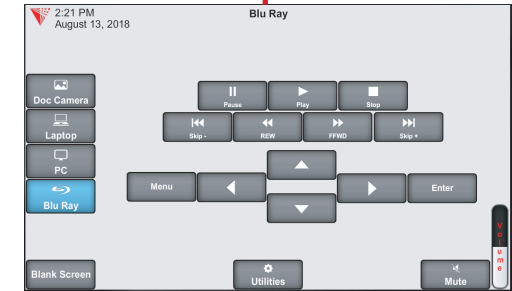
Normally the document camera is turned on automatically at system startup but should no image appear, please ensure the document camera is turned on.



### Laptop/Personal Devices

Touch the Laptop button to display your personal device onto the projector screen. VGA, Hdmi and wireless (Air Media) connectivity are available.

 +  to activate projector mode on windows computers when using VGA or Hdmi. Install the air media app for wireless presentation on Windows, Mac, Android and iOS devices.



### Bluray

Touch the Bluray button to display the Blu Ray/DVD player onto the projector screen.

Normally the player is turned on automatically at system startup but should no image appear, please ensure the Bluray player is turned on.