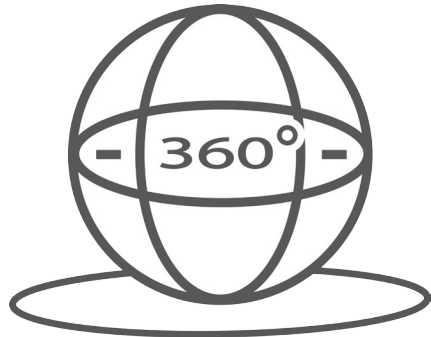
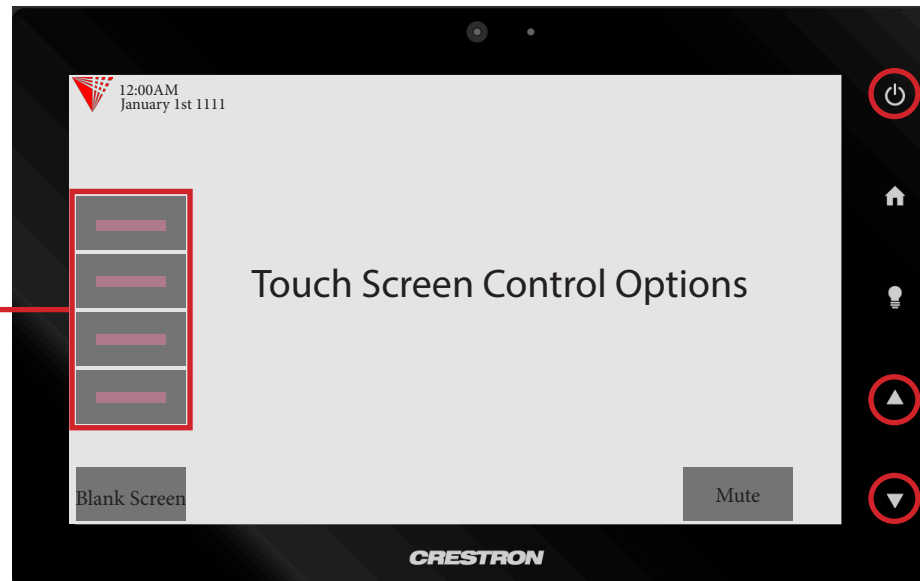


# ILLINOIS TECH



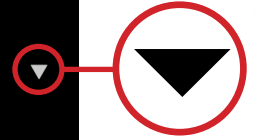
Click here for 360° Image of Classroom



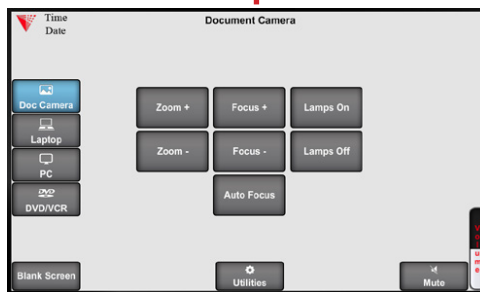
Power On/Off



Volume Up/Down



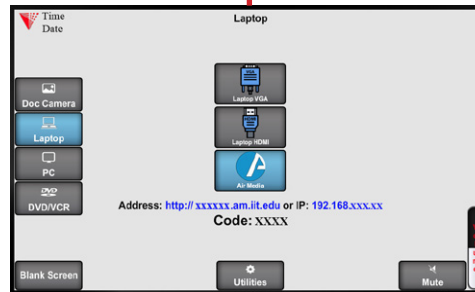
## Input Options



### Document Camera



Touch the Doc Camera button to display images from the document camera onto the projector screen.

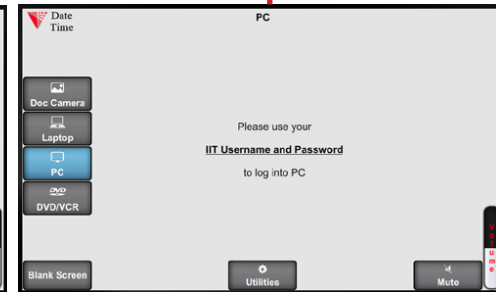
Normally the document camera is turned on automatically at system startup but should no image appear, please ensure the document camera is turned on.



### Laptop/Personal Devices

Touch the Laptop button to display your personal device onto the projector screen. VGA, Hdmi and wireless (Air Media) connectivity are available.



 +  to activate projector mode on windows computers when using VGA or Hdmi. Install the air media app for wireless presentation on Windows, Mac, Android and iOS devices.



### PC

Touch the PC button to display the desktop computer onto the projector screen.

Press the power button on the PC to turn it on. Use the IIT Username and Password to Log in.

Use  +  buttons to extend or duplicate the PC image.