



# You, Elevated

Illinois Tech  
Mumbai  
Prospectus  
2026

**ILLINOIS TECH** MUMBAI



# Top 100 in the United States

**World's Top Universities**

— *TIME Magazine/Statista 2026*



# Contents

■ <b>Message from the President</b> .....	1
■ <b>About Illinois Tech</b>	
A History of Inventing the Future .....	3
Our Alumni Innovators .....	4
■ <b>Chicago’s Tech University for India’s Innovators</b> .....	5
■ <b>What Makes Illinois Tech Mumbai Unique?</b> .....	6
■ <b>Teaching and Learning</b>	
Education Elevated.....	7
Research That Moves the Needle .....	8
■ <b>Campus and Facilities</b>	
A Campus with a Calling .....	9–10
■ <b>Mumbai: Where Innovation Is a Way of Life</b> .....	11–12
■ <b>Student Support and Well-Being</b>	
Your Well-Being Matters.....	13
Support That Lifts Your Career Prospects .....	13
■ <b>Skills for the Future</b> .....	14
■ <b>Academic Programs at Illinois Tech Mumbai</b>	
Undergraduate Programs .....	15–16
Graduate Programs .....	17–18
■ <b>Admissions, Eligibility, and Application Process</b> .....	19–25
■ <b>Tuition</b> .....	25
■ <b>Scholarships and Financial Support</b> .....	26–27
■ <b>Refund Policy for Academic Year 2026–27</b> .....	27–28

# Message from the **President**

Greetings! Thank you for learning more about Illinois Tech Mumbai. We are honored to expand our place within India's esteemed educational ecosystem and excited to share details about our global university community with you.

As a student at our campus in Mumbai, you will find a home within our community. You'll benefit from the same world-class education that students receive on our campus in Chicago as you join our talented and passionate international network of scholars and researchers.

We're proud of Illinois Tech's one-of-a-kind education and the extraordinary outcomes of our graduates. Our academic programs emphasize hands-on learning, teamwork, and leadership in subject areas that meet the needs of global industry. We balance that with guaranteed access to career-focused experiences that will uniquely prepare you with the twenty-first-century skills that employers seek. This innovative approach will empower you to take on the greatest challenges facing society.

**This is a truly elevated, modern university education.** You will take the practical, agile education that high schools in India teach so well and combine it with a distinctive, real-world, experiential education taught at Illinois Tech. You'll participate in powerful, future-focused discussions and learn how to create change and innovate in a way that no other university can prepare you to do. In the end, you will gain the full range of essential skills to excel professionally—the same advanced capabilities mastered by the top Indian CEOs and leaders who have experienced this type of innovative education.

You'll do all of this as a member of a university that is #1 in Illinois and #22 in the United States for the best salaries of its graduates (*Wall Street Journal/College Pulse 2025*). We're also proud to have one of the top-ranked undergraduate and graduate computing programs in the United States (*U.S. News & World Report in 2026, 2025*) and one of the best M.B.A. programs in the country (*Princeton Review 2025*).

Illinois Tech Mumbai is here to help you succeed. Our community, both in India and the U.S., is committed to supporting you—not only in your academic and professional pursuits, but also in your personal fulfillment and wellness.

Thank you again for exploring Illinois Tech Mumbai. We would be honored to have you join our community.

Sincerely,

**Raj Echambadi**

President, Illinois Tech



# A History of Inventing the Future

It all started in 1890, when one of Chicago's great industrial visionaries founded a university to educate talented minds ready to harness technology and lead the city into a new industrial age. Excellence isn't built overnight; it's shaped over generations, and for more than a century, Illinois Tech has advanced technology and innovation for all. We remain committed to our mission to support students from all backgrounds in their pursuit of a world-class education.

Our graduates have shaped modern life, from the cell phone to the Pentium microprocessor, and continue to pioneer progress that serves humanity.



## Elevate

Illinois Tech's Elevate initiative guarantees that you will gain hands-on experience that translates classroom learning into real-world readiness. Through internships, research, competitions, study away, career-focused short courses, and other opportunities, you'll boost your CV and develop the twenty-first-century skills that global employers seek. These include analytical thinking, creativity, problem-solving, emotional intelligence, and adaptability. Elevate also provides you with academic and career mentorship, helping you chart a path that aligns your interests, strengths, and aspirations.

Most importantly, Elevate allows you to design your own learning journey, empowering you with the freedom and support to shape your path.

# At a glance

**#1 in Illinois and #22 in the United States for Best Graduate Salaries**

Wall Street Journal/College Pulse 2026

**One of only five STEM universities in the U.S. to be named an “Opportunity College and University”**

Carnegie Foundation/ACE 2025

**Top 100 undergraduate and graduate computer science programs in the U.S**

U.S. News & World Report 2026, 2025

**Listed among the Best Business Schools for our Master of Business Administration program**

Princeton Review 2025

## Our Alumni Innovators

An Illinois Tech education doesn't end at graduation; it connects you to a global community of over 80,000 alumni who are building, leading, and innovating across the world. This community includes the inventor of the cell phone, the founder of Linksys, world-renowned architects, and pioneers shaping industries across technology, business, and public life.

In India alone, more than 10,000 Illinois Tech alumni are contributing at the highest levels, driving innovation, shaping policy, and leading global enterprises.



**“The profound impact I was able to create through the Godrej brand in India stands as a testament to the education and experience I gained at Illinois Tech.”**

**Jamshyd N. Godrej**

(M.S. Mechanical Engineering '72)  
Chairman of the Godrej & Boyce conglomerate in India



**Rajeev Chandrasekhar**

(M.S. Computer Science '85)  
Former Member of Parliament and former Minister of State for Electronics and IT in India

**Rohit Prasad**

(M.S. Electrical Engineering '99)  
Lead scientist behind Amazon Alexa

**“I was fortunate to have a great graduate school adviser who trained me up for industry and what was going to be my passion.”**



You're invited to join our global community of leaders and innovators.

# Chicago's Tech University for India's Innovators

India is writing the next great chapter of global innovation, and Illinois Tech is proud to continue to be part of that story. More than 20 years ago, the university began offering a high-quality education in India through distance learning and innovative broadcast-based programs. Illinois Tech is now proud to be the first university in the U.S. to grant degrees in India with an on-site campus in Mumbai.

India's National Education Policy 2020 and the UGC's Foreign Higher Educational Institutions regulations have opened new opportunities for collaboration between world-class universities and India's knowledge ecosystem. These frameworks enable Illinois Tech to bring its applied, STEM-focused education to a country defining the future of global innovation.

With its expanding industries, young talent pool, and shared commitment to problem solving and entrepreneurship, India represents both a partner and a platform for progress. Illinois Tech Mumbai builds on this synergy, preparing students to lead, innovate, and create impact within India and beyond.





# What Makes Illinois Tech Mumbai Unique?

## **Chicago's Tech Excellence, Available Globally**

As Chicago's leading tech-focused university, Illinois Tech has been at the forefront of tech innovation since our founding in 1890. We bring the same excellence to our Mumbai campus.

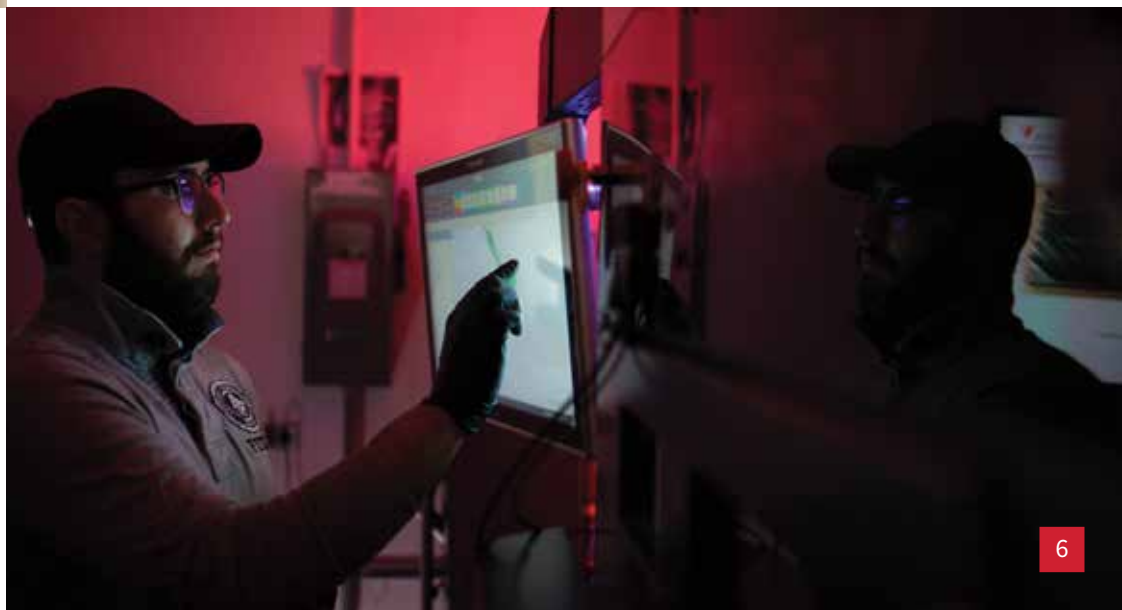
## **Opportunity and Value Await**

Illinois Tech students enjoy competitive salaries and high employment rates upon graduation. At our Mumbai campus, you will receive the same high-quality STEM training and education that will prepare you for career success.

## **Experiential Learning: Your Pathway to Success**

Illinois Tech students take part in real-world programs that give them the training they need to build their CVs and graduate prepared to lead in the careers of the future. As a Mumbai campus student, you will have access to the same pioneering experiential-learning programs that will set you on a path to career readiness.

**Elevate your future at  
Illinois Tech Mumbai.**





# Education Elevated

From pioneering the first industrial nuclear reactor in the United States to operating the country's first functional microgrid, Illinois Tech has been synonymous with innovation. That same spirit drives Illinois Tech Mumbai, bringing our world-class academic excellence, research culture, and innovation mindset to India's technology and business hub.

## A Global Faculty for a Global Future

Faculty from the Chicago campus will lead modules, deliver immersive guest lectures, and guide research projects, ensuring you experience the same academic rigor as an Illinois Tech Chicago student. Joining them are distinguished Indian faculty with deep industry experience and contextual understanding, offering mentorship that connects global knowledge with local relevance.



## An Interdisciplinary Curriculum

Illinois Tech's range of programs integrate technical mastery, creative problem-solving, and interdisciplinary exploration. You will study across diverse fields, and also have the opportunity to take courses outside your major, promoting a well-rounded education. Many programs culminate in a capstone project where you will integrate your learning with practical application in collaboration with industry partners.



## Hands-On Learning in and out of the Classroom

Our teaching approach goes beyond textbooks. At Illinois Tech, we place emphasis on experiential learning through projects, research, lab work, and internships, equipping you with both practical skills and theoretical knowledge.



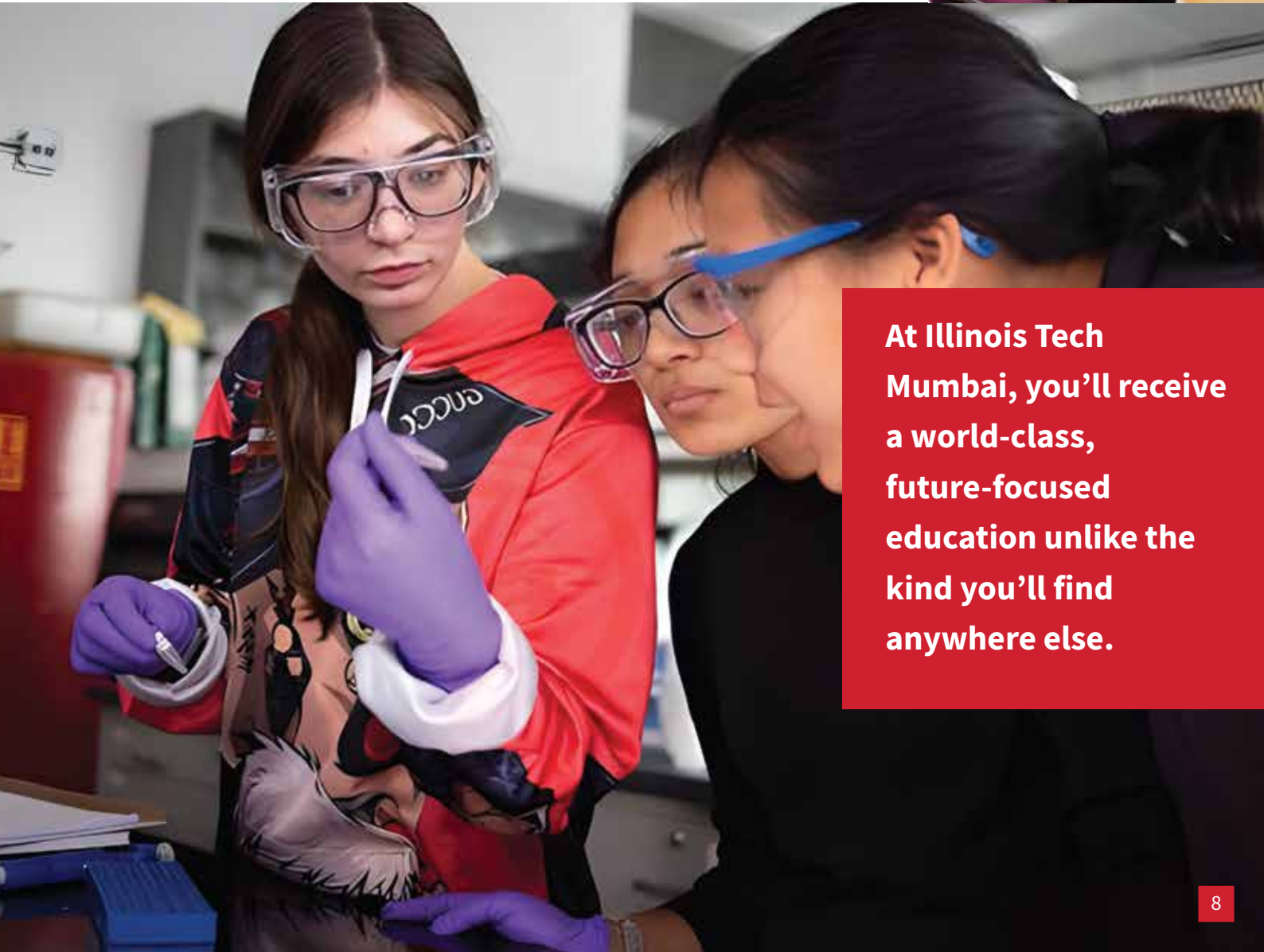
# Research That Moves the Needle

Illinois Tech's research drives discovery that shapes the world. As part of our community, you will explore new ideas under the guidance of expert faculty and researchers. The university's global network includes collaborations with Argonne National Laboratory, Fermilab, and top medical and technology institutions, providing access to cutting-edge knowledge and methods.

Our research ecosystem in Chicago includes five major research institutes: IIT Research Institute, Institute for Food Safety and Health, Ed Kaplan Family Institute for Innovation and Tech Entrepreneurship, Pritzker Institute of Biomedical Science and Engineering, and Wanger Institute for Sustainable Energy Research, along with more than 25 centers advancing work in cybersecurity, computation, energy systems, biomedical technology, and more.

*"That learning-by-doing approach really prepares us for industry. Illinois Tech helped me go from learning concepts to applying them in real projects."*

**Sanjana  
Waghray**  
(M.A.S. DSC  
2nd Year)

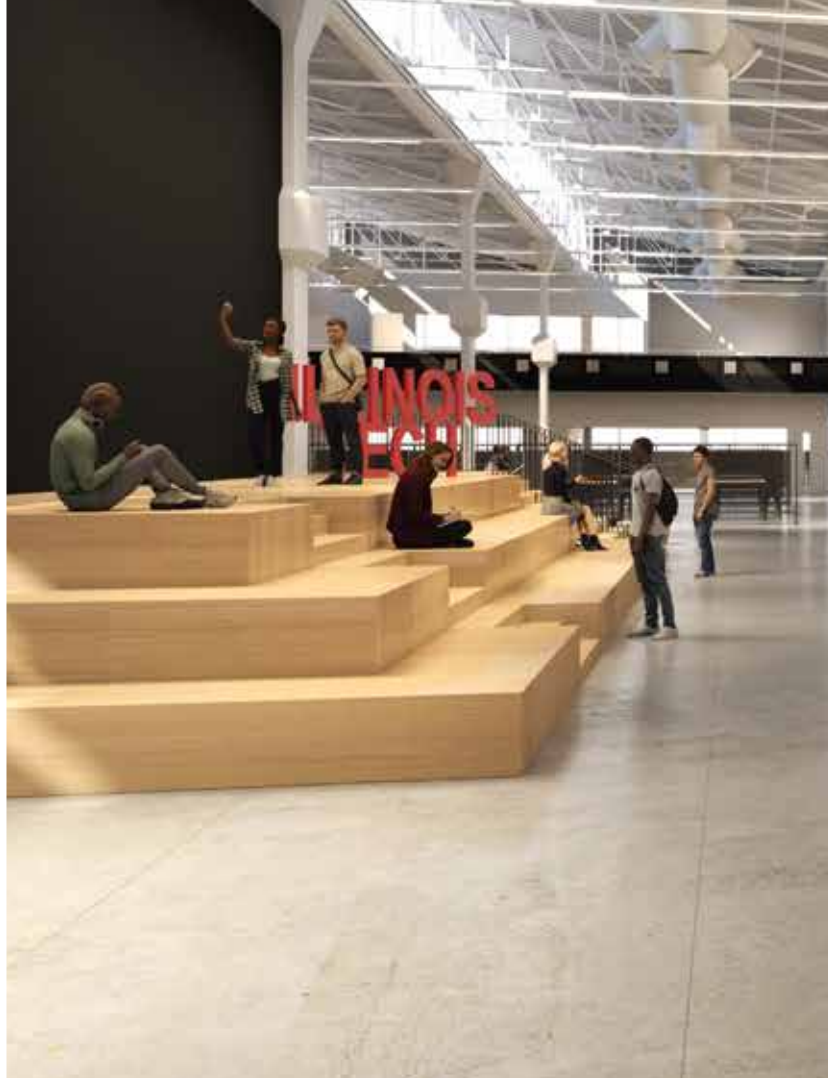


**At Illinois Tech  
Mumbai, you'll receive  
a world-class,  
future-focused  
education unlike the  
kind you'll find  
anywhere else.**

# A Campus with a Calling

When you step onto the Illinois Tech Mumbai campus, you'll sense familiar echoes of our landmark Chicago campus, recognized by the American Institute of Architects as one of the 200 most important works of architecture in the United States and listed on the National Register of Historic Places.

While our legacy is steeped in history, our vision looks firmly ahead. Illinois Tech Mumbai embodies the belief that true excellence lies not in preserving the past, but in reimagining it for the future. Here, learning isn't confined by walls; it's designed to challenge convention.



## An Environment Designed for Learning

Our Mumbai campus is envisioned as a modern, beautiful, and well-equipped space that is designed to be safe, respond to student needs, and encourage growth.



*Note: This image is an early rendering and only an approximation*

### Academic Facilities

- Classrooms equipped with modern teaching aids
- Lecture halls for larger gatherings, with AV equipment
- Subject-specific laboratories (science, computer, language, and more), based on the curriculum
- A spacious library with digital and physical collections, study zones, and group discussion areas
- Administrative offices: Space for faculty members, meeting rooms, and administrative offices
- Co-working spaces: Innovation hubs and research centers

### Campus Amenities

- Dining hall
- Transportation to the nearest public transport services
- Gated security, CCTV surveillance, and emergency response systems
- Smart campus features, including Wi-Fi and smart classrooms

### A Collaborative Campus Culture

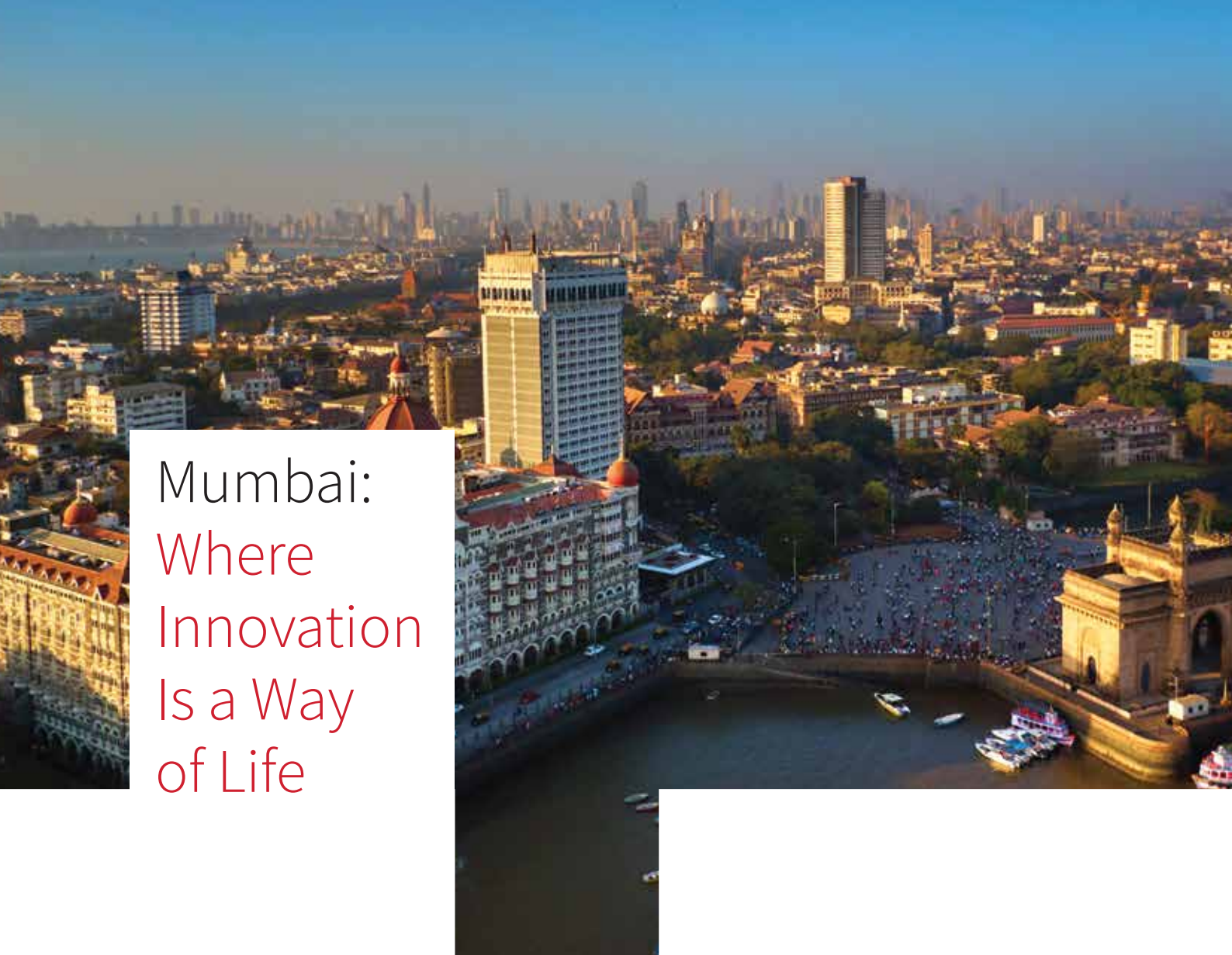
As an Illinois Tech Mumbai student, you'll be part of an active community that celebrates diversity. Student councils and committees shape life on campus, ensuring responsibility and fostering a collaborative environment. Cultural festivals celebrating both Indian and global traditions will contribute to mutual respect and broaden perspectives. Social initiatives, such as volunteering with NGOs and social organizations, will allow you to make a meaningful social impact.

**Javed and  
Shagufta  
Shethwala**

**Parents of Faisal Shethwala**  
**Economics 4th Year**

*“As a parent, I’m thrilled that my son is studying at Illinois Tech, where he’s diving into hands-on business and entrepreneurship opportunities that fuel his passion for startups. The university’s robust resources, including incubators, mentorship programs, and innovation hubs, are equipping him with real-world skills to turn his ideas into reality. Seeing him thrive in this supportive, cutting-edge environment makes me incredibly proud and happy about his future.”*





# Mumbai: Where Innovation Is a Way of Life

Illinois Tech values innovation, creativity, and inclusivity, just like the great global city of Mumbai. Dynamic, diverse, and driven by possibility, the city reflects the very spirit of Illinois Tech. Our home in Chicago has always shaped how we learn: by engaging with industry, community, and culture to solve real-world problems. The same philosophy now defines Illinois Tech Mumbai.

As India's financial and commercial capital, Mumbai offers you seemingly limitless professional opportunities. With headquarters of multinational corporations, startups, and cutting-edge research centers, the city puts real-world innovation and entrepreneurship right outside your door.

Situated in the Godrej Business District of Vikhroli, Illinois Tech Mumbai is located in a suburb known for its high-quality infrastructure, green spaces, and one of India's largest privately managed mangrove reserves.

Mumbai is the only city in India to appear on *Time Out's* 2025 World's Best Cities survey.

### Culture and Creativity

Mumbai is a vibrant melting pot of languages, traditions, and creativity. You'll join people from across India and around the world who call this city home. In fact, about 40 percent of Mumbai's population comes from other states. The city fosters a spirit of inclusion and innovation, reflected in everything from its booming film industry and artistic hubs to its cafés and street-food culture.

### Living Well in Mumbai

Mumbai offers a lifestyle that suits a range of student budgets. As with most major global cities, the cost of living depends on your choices, such as accommodation type, proximity to the city center, and personal lifestyle. Students typically find that areas around the Illinois Tech Mumbai campus in Vikhroli provide a balanced mix of affordability, convenience, and access to key amenities.

### Getting Around the City

Getting around Mumbai is seamless thanks to the city's extensive transport network. Local trains, metro lines, buses, and ferries link nearly every part of the metropolis. From our campus, you will have direct access to major transit routes, reducing commute times and enabling you to tap into the full city experience, whether for internships, networking events, cultural outings, or weekend exploration.

## Find Your Community

At Illinois Tech's Chicago campus, student life is powered by 170+ student organizations, including groups that celebrate global perspectives, and you can start your own organization.

Illinois Tech Mumbai will be inspired by this model and student engagement, prioritizing student councils and cultural and technical clubs. You can contribute, collaborate, and lead within a community that reflects both Illinois Tech's global spirit and Mumbai's dynamic context.





# Support That Lifts Your Career Prospects

Illinois Tech's legacy of shaping exceptional careers is built on a combination of strong academic and experiential learning programs.

## Your Well-Being Matters

Your support ecosystem at Illinois Tech Mumbai is built to welcome who you are and what you bring. You will find a community that values diversity, respects every voice, and turns differences into strengths.

You will have access to counseling services, mentorship programs, and peer-support groups designed to help you navigate academic pressures and personal challenges with confidence. These initiatives are built to foster a campus culture where asking for help is seen as a sign of strength and where every student feels supported.

In accordance with UGC guidelines, our campus will also include a grievance redressal cell, gender sensitization initiatives, and an anti-ragging committee. Illinois Tech maintains a zero-tolerance policy toward ragging. Ragging in any form is strictly prohibited on campus and is a punishable offense under UGC regulations.

### Career Support

With a dedicated careers team, you will receive support through career counseling, workshops, CV clinics, and networking events with industry leaders. Workshops in entrepreneurship, leadership, and digital skills will help you adapt, innovate, and lead with confidence in today's workplace. You'll also gain access to a global e-mentoring network of alumni who bring perspectives from diverse fields, giving you guidance that spans industries and continents.

### Connected to Industry

Through Illinois Tech's strong industry linkages in India and abroad, you'll have access to internships, live projects, placements, and professional accreditation opportunities. These connections are further strengthened by faculty with industry experience and capstone projects that involve direct collaboration with industry partners.

**Ghanshyam  
and Reema  
Ramani**

**Parents of Karishma Ramani  
M.S. Marketing Analytics '26**



*"As parents, seeing our daughter step into Illinois Tech as a student and now working in the marketing department at the school fills us with immense pride and happiness. She has developed strong analytical skills under the guidance of outstanding professors and is now on her way to building her own venture—supported by the incredible networking opportunities Illinois Tech provides. We are truly proud of her journey and grateful to Illinois Tech for helping shape her growth and success."*

# Skills for the Future

At Illinois Tech Mumbai, every program is designed to help you build the skills that employers value most. You'll merge technical mastery and problem-solving with creativity and adaptability, all anchored in Illinois Tech's globally recognized education.

## STEM-Focused Learning

Illinois Tech offers world-class degree programs in academic disciplines where significant innovation is taking place. Whether you choose artificial intelligence, data science, computer science, or business, you'll explore your studies through a future-focused tech lens.

## Real-World Readiness

Workshops in in-demand professional skills further prepare you to lead and adapt in demanding work

## Global Mobility Program

We believe that education should extend far beyond one campus or country. As part of the university's global community, you'll have opportunities for short-term study at our Chicago campus or to pursue summer internships abroad, experiencing firsthand how technology and innovation connect across borders. Regular interactions with visiting scholars, international guest faculty, and industry experts will bring a world of ideas into your classroom.

Collaborative projects will help you build cross-cultural understanding and a global mindset, while continuing your studies in India.

Sanjay and  
Manisha  
Davey

Parents of Mansi Davey  
M.S. Marketing Analytics '25



*"Seeing our daughter become the first in our family to pursue higher studies in the United States and successfully complete her master's degree from Illinois Tech has been a moment of great pride for us. The university provided not only strong academic foundations, but also the confidence, support, and global exposure that helped her begin her career with purpose and clarity."*

environments. By combining academic and experiential learning, Illinois Tech Mumbai ensures that you graduate with the ability to innovate, collaborate, and create meaningful impact.

## Regulatory Assurance and Accreditation

Illinois Tech Mumbai operates in accordance with India's National Education Policy (NEP) 2020 and the UGC (Foreign Higher Educational Institutions) Regulations, 2023, ensuring academic quality and compliance with national standards.

And when you're ready to take the next step, you'll find a seamless pathway to Illinois Tech's postgraduate programs.

**Year-based pathways:** As an undergraduate student, you may pursue academic pathways such as 2+2 or 3+1 arrangements between the Mumbai and Chicago campuses. As a graduate student, you may follow a 1+1 pathway. If you transfer between campuses, you will pay the applicable tuition of the campus to which you have transferred.

**Semester-based pathways:** You may also participate in a study abroad program at the Chicago campus for one or two academic terms (excluding the final year). During this period, you will continue to pay the Mumbai tuition fee while studying in Chicago.



# Academic Programs at Illinois Tech Mumbai

## Undergraduate Programs

### **B.S. Artificial Intelligence**

**Duration:** 4 years (full-time)

**Seats (Year 1):** 30

**Track:** STEM

Begin with introductory courses in programming, computer science, mathematics, and statistics to build a firm technical foundation. From there, learn core AI concepts and techniques, including state-space search, game-playing, machine learning, neural networks, planning, computer vision, and language understanding.



**#64 Best Schools for Computer Science in the United States**

— *Times Higher Education 2026*

## **B.S. Business Administration**

**Duration:** 4 years (full-time)

**Seats (Year 1):** 30

**Track:** Innovation and Society

Master key business concepts and tech-focused skills for careers in management, entrepreneurship, and consulting. Customize your learning with specializations that help you drive innovation through technological entrepreneurship while building STEM-driven analytical and quantitative capabilities across all areas.

## **B.S. Business and Information Technology**

**Duration:** 4 years (full-time)

**Seats (Year 1):** 30

**Track:** Innovation and Society

Develop knowledge in business and information-technology disciplines, critical-thinking skills, and technical expertise through this STEM-designated program. Prepare for a career as a manager and leader who can adapt to changing technological environments, lead projects and teams, and make strategic decisions across organizations.

## **B.S. Computer Science**

**Duration:** 4 years (full-time)

**Seats (Year 1):** 30

**Track:** STEM

Gain a strong foundation in the key principles and practices of software design, development, and deployment of high-quality software solutions in this software engineering-focused degree program. Stay ahead of the curve with courses in cutting-edge, in-demand topics dominating the computer science field, such as data science, distributed and cloud computing, information security, or information and knowledge



management systems. Learn how tools in artificial intelligence and machine learning have accelerated the field.



**Illinois Tech's business programs are accredited by AACSB. Only 6% of business schools globally are.**

## **Accelerated Master's Program (AMP)**

Two degrees. One streamlined path. With Illinois Tech's Accelerated Master's Program (AMP), you can earn both your undergraduate and graduate degrees in as few as five years. Two AMP options are available: the Co-Terminal AMP for students with at least 12 credits remaining, and the Advanced Standing AMP for those with fewer than 12 credits left to complete or recent alumni.

# Graduate Programs



## M.A.S. Artificial Intelligence

**Duration:** 2 years (full-time)

**Seats (Year 1):** 30

Apply AI skills in biomedical engineering, robotics, business, and psychology. Collaborate with experts on cutting-edge research projects to elevate your professional prospects and deepen your AI knowledge.

## M.S. Computer Science

**Duration:** 2 years (full-time)

**Seats (Year 1):** 30

Build advanced computational theory and applied skills in AI, big data, and cybersecurity through one of three pathways: research-driven coursework, a master's-level project, or a thesis.

**Top 100 undergraduate and graduate computer science programs in the U.S.**

— U.S. News & World Report 2026, 2025





## M.A.S. Data Science

**Duration:** 2 years (full-time)

**Seats (Year 1):** 30

Develop expertise in machine learning, deep learning, big data analytics, and data visualization, with a strong foundation in mathematics, programming, or statistics. Engage in collaborative, real-world projects with industry partners and showcase your experience to the network of connections you'll build.

## Master of Business Administration

**Duration:** 2 years (full-time)

**Seats (Year 1):** 30

Master strategic management, high-level leadership, and the ability to leverage emerging technologies. Illinois Tech's M.B.A. features interactive courses, a hands-on approach based on case studies, and real-world projects.

**Recognized among the  
Best Business Schools  
for our Master of  
Business Administration  
program**

— *Princeton Review 2025*



**Sai Allena**

Master of  
Design '25

*"Illinois Tech has engrossed me in a curriculum that has provided me with the skills and tool sets that are directly translatable into industry success. And most of all, it has provided me with an experience that has helped me grow as a human being that I'll be carrying for the rest of my life."*

# Admissions

## Undergraduate Admission Requirements



### What we consider

When you apply for an undergraduate program, we look at:

#### High school/secondary school performance

- Your subjects and academic rigor (see Recommended Coursework below)
- Your grade point average

#### Choice of major

- Each program has specific criteria for admission
- Your school subjects should align with the major you choose (see Recommended Coursework below)

#### Standardized test scores (optional)

- ACT/SAT are optional
- If submitted, they are considered as part of your profile
- Not submitting ACT/SAT scores will not hurt your chances for admission or scholarships

#### Essays

- Quality of your responses
- How well you express your academic interests and future goals
- Any context or circumstances that may have affected your high school performance

### Recommended (Not Mandatory) High School Coursework

Subject	Innovation & Society Track	STEM Track
Mathematics	3–4 years	4 years (pre-calculus or higher strongly recommended)
Science	3 years	4 years (including physics or AP physics strongly recommended)
English	4 years	4 years
Social Science	3 years	3 years

#### Tip:

Some Illinois Tech essay questions are optional. We encourage you to use them to tell us more about your interests, needs, and goals. This helps us support your pathway to success. Choosing not to answer optional questions will not negatively impact your application.

### Additional Recommendations:

- Students from the Commerce stream/group are also eligible to apply, provided they meet the specified academic and subject prerequisites.
- Take AP, IB, honors, or dual-enrollment courses if your school offers them.
- Strong performance in rigorous courses shows readiness for college-level study.
- We judge course rigor in the context of what your school offers.
- Wherever possible, include letters of recommendation from teachers in subjects related to your intended major.

### Eligibility

For applicants studying under Indian or similar school boards (CBSE, CISCE, IB, Cambridge, State Boards, etc.), you need at least a “B” grade.

This means:

- **CBSE:** minimum cumulative average of 61% (B2)
- **CISCE:** minimum cumulative average of 50% (Second Class)
- **IB:** minimum subject score of 5
- **GCSE / IGCSE:** minimum grade 6
- **A and AS Levels:** minimum grade C or equivalent “Credit”/“Good” rating in your board’s scheme

These are minimum eligibility thresholds for your application to be considered. However, meeting the minimum does not guarantee admission.



# Undergraduate Applications

The application process is the same for domestic and international students, with some additional documents required for international applicants.

- Domestic students: Indian citizens
- International students: non-Indian citizens

## Step 1: Submit Your Application

Create an account and submit your application on the Illinois Tech online application portal.

**Application fee (undergraduate): ₹5,000**

## Step 2: Submit Your Official High School/Secondary School Transcript

Ask your school to send your official transcripts to Illinois Tech, preferably directly via the school's electronic transcript service. If this is not available, you may mail sealed official transcripts to the university.

## Step 3: Decide If You're Submitting Optional Materials

- You may choose to submit a letter of recommendation and/or standardized test scores, but these are optional.
- All students are considered for the university's scholarships, whether or not they submit these materials.

### Letter of Recommendation (Optional)

- You may submit up to three letters
- Your counselor can email them directly to the university or
- You can request the letter to be sent through the Illinois Tech application

### When should you submit a recommendation?

Consider submitting a letter of recommendation if your recommender can add insight that goes beyond your grades and basic application.

### Standardized Test Scores (Optional)

- Standardized tests are not required for undergraduate applicants.

This policy applies to all applicants and to all scholarship decisions.

If you choose to submit scores:

- SAT code (Illinois Tech): 1318
- ACT code (Illinois Tech): 1040
- Illinois Tech will super score any official scores submitted.



## Step 4: Interview with the Admissions Committee

You will be invited to interview with the admissions committee before receiving a final offer.

### How does Illinois Tech make decisions without a test score?

We use a holistic review approach. The admissions committee looks at:

- Rigor and level of coursework (including math for more selective majors)
- Academic performance, including honors/AP/IB courses
- Your personal statement
- Extracurricular involvement and other achievements
- Any additional information in your application

# Graduate Admission Requirements

## What we consider

When you apply for a graduate program, we look at:

### Letters of Recommendation

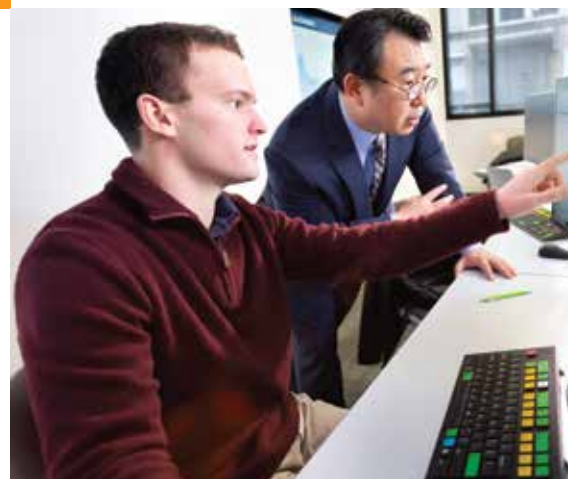
- One letter required
- Two letters preferred

### Professional Statement of Objectives

- Outlining academic interests, career goals, and fit with the program

### CV/Résumé

- Detailing education, work experience, certifications, and relevant skills



## Program-Specific Requirements

Program	Academic Eligibility – Indian Applicants	Academic Eligibility – International Applicants	Academic Background
<b>M.A.S. Artificial Intelligence</b>	<ul style="list-style-type: none"> <li>• Minimum three-year undergraduate degree from NAAC “A” or better institutions</li> <li>• 60% cumulative average (Second Class) or a “7”/“Good” rating</li> </ul>	<ul style="list-style-type: none"> <li>• Minimum four-year undergraduate degree (any field; not necessarily computer science or a related field)</li> <li>• Overall GPA of 3.0/4.0</li> </ul>	<p>Applicants without a bachelor’s degree in computer science must have prerequisite undergraduate coursework with a grade B or better in either:</p> <ul style="list-style-type: none"> <li>• Accelerated Computer Science or</li> <li>• Object-Oriented Programming I and II</li> </ul>
<b>M.S. Computer Science</b>	<ul style="list-style-type: none"> <li>• Minimum four-year undergraduate degree in computer science or a related discipline</li> <li>• 60% cumulative average (Second Class) or a “7”/“Good” rating</li> </ul>	<ul style="list-style-type: none"> <li>• Minimum four-year undergraduate degree in computer science or a related discipline</li> <li>• Overall GPA of 3.0/4.0 or higher</li> </ul>	<ul style="list-style-type: none"> <li>• Applicants from related fields such as electrical and computer engineering are eligible and may be asked to complete one or two prerequisite courses.</li> <li>• Applicants from non-CS backgrounds (e.g., civil or mechanical engineering) are not eligible, as these programs typically do not include core CS coursework.</li> <li>• In exceptional cases, applicants from non-CS backgrounds with significant professional experience, certifications, or substantial coursework in computer science may be reviewed case by case.</li> <li>• Three-year bachelor’s degree holders are not considered unless they also hold a master’s degree.</li> </ul>
<b>M.A.S. Data Science</b>	<ul style="list-style-type: none"> <li>• Minimum three-year undergraduate degree from NAAC “A” or better institutions</li> </ul>	<ul style="list-style-type: none"> <li>• Minimum four-year undergraduate degree (not necessarily in computer science)</li> </ul>	<p>Applicants are reviewed individually, but are expected to have basic knowledge of:</p> <ul style="list-style-type: none"> <li>• Discrete mathematics</li> <li>• Linear algebra</li> </ul>

Program	Academic Eligibility – Indian Applicants	Academic Eligibility – International Applicants	Academic Background
	<ul style="list-style-type: none"> <li>60% cumulative average (Second Class) or a “7”/“Good” rating</li> </ul>	<ul style="list-style-type: none"> <li>Overall GPA of 3.0/4.0</li> </ul>	<ul style="list-style-type: none"> <li>Probability and statistics</li> <li>Relational databases</li> <li>At least one programming language such as MATLAB, C++, Java, Python, or Ruby</li> </ul> <p><b>Prerequisite Coursework</b></p> <ul style="list-style-type: none"> <li>Applicants who lack some of this preparation but are otherwise strong (for example, with relevant work experience) may still be admitted.</li> <li>Such applicants will be required to complete any missing prerequisite coursework. (Further details are available on Illinois Tech’s Prerequisite Undergraduate Coursework page.)</li> </ul>
<b>Master of Business Administration</b>	<ul style="list-style-type: none"> <li>Minimum three-year undergraduate degree from NAAC “A” or better institutions</li> <li>60% cumulative average (Second Class) or a “7”/“Good” rating</li> </ul>	<ul style="list-style-type: none"> <li>Minimum three-year undergraduate degree with an overall GPA of 3.0/4.0</li> </ul>	<p><b>Standardized Tests:</b></p> <ul style="list-style-type: none"> <li>GMAT or GRE scores are not required for the M.B.A. program.</li> </ul>

## English Proficiency Requirement

### Undergraduate Programs

Applicants must demonstrate proficiency in English. This can be met through one of the following:

- TOEFL iBT:** 80 or above
- IELTS:** 6.5 or above
- Duolingo:** 115 or above

#### Important information:

- Illinois Tech’s TOEFL code is 1318.**
- For IELTS, send scores electronically to Illinois Tech and add your IELTS number in your application tracker, if asked.
- Score validity:** TOEFL, IELTS, and Duolingo scores are valid for two years from the test date.
- Accepted / not accepted versions:**
  - IELTS Online is not accepted.
  - TOEFL iBT Home Edition is accepted.

*Note: International students who meet the academic and financial criteria but do not yet meet English proficiency requirements may receive conditional admission. You must then submit an acceptable English test score before full admission is granted.*

### English Proficiency Waivers

The English proficiency requirement may be waived if you have received the following minimum score on any of these exams:

- SAT:** 550 EBRW
- ACT English:** 25
- AP Eng:** 4 or 5
- IB:** 5, 6 or 7 on SL/HL English A Literature or English A Language & Literature
- GCE/GCSE/IGCSE:** English Grade of A or B
- Standard XII English:** Minimum B average (60%+) from CBSE, CISCE, or state boards
- Gaokao English score of 120**

## English as Second Language (ESL) Service Providers:

- **Illinois Tech** - IEP Level 4
- **Kaplan Advanced Level**
- **ELS Level 112**
- **The Language Company Level 9**

## Exempt Countries (country where the degree was obtained)

Antigua	Australia	Bahamas
Barbados	Belize	British Virgin Islands
Canada (except Quebec)	Dominica	Ghana
Grenada	Guyana	Jamaica
Malta	New Zealand	Nigeria
St. Kitts and Nevis	St. Lucia	St. Vincent and the Grenadines
Tobago	Trinidad	United Kingdom
United States	U.S. Virgin Islands	

## Graduate Programs

Applicants must demonstrate proficiency in English. This can be met through one of the following:

- **TOEFL iBT:** 80 or above
- **IELTS:** 6.5 or above
- **Duolingo English Test:** 115 or above

## English Proficiency Waivers

1. Completion of an intensive English program
  - Illinois Tech IEP Level 4
  - ELS Level 112
2. Completion of 60 semester hours at U.S. institutions within the last 36 months
3. Degree from a country listed below AND have attended that school for at least two years

Antigua	Ghana	St. Lucia
Australia	Grenada	St. Vincent and the Grenadines
Bahamas	Guyana	Tobago
Barbados	Jamaica	Trinidad
Belize	Malta	United Kingdom
British Virgin Islands	New Zealand	United States
Canada (except Quebec)	Nigeria	U.S. Virgin Islands
Dominica	St. Kitts and Nevis	

4. Applicants who do not hold undergraduate degrees from a country listed above but who have lived, worked, or studied in the United States for a substantial period may meet the English proficiency requirement and will be considered on a case-by-case basis. Your admission specialist in the Office of Graduate Admission will coordinate this determination with English Language Services.
5. Applicants may be considered to have satisfied the English language proficiency (ELP) requirement if they have completed a degree from a NAAC 'A' accredited institution in India and have earned a minimum of 60% in the undergraduate-level English course.
6. For applicants who completed a degree from a NAAC 'A' institution in India and have completed first or second language courses other than English, an official Medium of Instruction (MOI) letter may be submitted in lieu of English coursework. The MOI letter must be issued by the registrar or other authorized academic official of the awarding institution and must confirm that English was the language of instruction for the duration of the program.

# Graduate Applications

Rather than focusing only on test scores or marks, the university considers multiple factors to understand each applicant's potential. Before you begin, it helps to collect all required information and documents—this will make completing the application smoother and faster.

## When you apply, you will:

- Create an account on the online portal
- Use the App Tracker feature to monitor your application status
- Receive email updates, so keep an eye on your inbox

## Step 1: Submit Your Application

Create an account and submit your application via the Illinois Tech online application portal.

**Application fee (graduate): ₹5,000**

## Step 2: Submit Required Application Documents

You will need to upload the following:

### a) Official Transcripts

- Upload a scan of your official and original paper transcripts, individual mark sheets, or official electronic transcript provided by your institution's registrar.
- Do not upload web-based academic records or documents that state they are not official transcripts.
- If your degree is completed, you must also upload your original degree certificate or provisional certificate, along with your academic transcripts or mark sheets.

### b) Résumé/CV

Submit a current résumé or CV highlighting your academic background, professional experience, and any relevant projects or achievements.

### c) Personal Statement

Provide a clear, well-written statement outlining your academic interests, professional goals, and reasons for choosing Illinois Tech Mumbai and your program.

### d) Letters of Recommendation

- One letter of recommendation is required for master's programs. Letters should be from people who can evaluate your academic and/or professional potential (e.g., professors, employers).
- Letters are submitted through the online Application Portal:
  - You will enter your recommender's name and email ID.
  - They will receive an email invitation and will type their recommendation directly into the portal (they do not upload a separate document).

## Step 3: Interview with the Admissions Committee

You will be invited to interview with the admissions committee before a final offer is made.



## Tuition\*

### Undergraduate Programs

- **B.S. Artificial Intelligence**
- **B.S. Business Administration**
- **B.S. Business and Information Technology**
- **B.S. Computer Science**

INR 16 lakhs per year

### Graduate Programs

- **M.A.S. Artificial Intelligence**
- **M.S. Computer Science**
- **M.A.S. Data Science**
- **Master of Business Administration**

INR 20 lakhs per year

\*The tuition fee is subject to a nominal periodic increase.

# Scholarships and Financial Support

True to our founding purpose to open doors of opportunity through education, Illinois Tech supports high-potential students with a transparent, UGC-compliant framework promoting diversity, merit, and holistic excellence. We are committed to a world-class education and encourage you to look beyond the cost to the true value of your degree—specifically the skills gained both in and out of the classroom that secure your long-term career success.

Scholarships exist to:

- **Recognize excellence beyond the classroom**—in sports, arts, leadership, and community service
- **Advance access, diversity, and inclusion**, in line with University Grants Commission (UGC) regulations and all applicable laws

## Categories of Scholarships

### Merit-Based Scholarships

Merit-based scholarships recognize students who demonstrate exceptional scholastic achievement and intellectual curiosity. These awards reward consistent academic performance, dedication to learning, and academic distinction, reinforcing our belief that ambition and excellence deserve recognition.

### Need-Based Scholarships (Financial Aid)

Awarded on the basis of demonstrated financial need, need-based scholarships ensure that deserving students can pursue their goals regardless of financial background. This support reflects Illinois Tech's long-standing commitment to opportunity, equity, and social mobility, so you can focus on growth.

### Special/Achievement Scholarships

These scholarships honor students who have demonstrated exceptional accomplishments beyond academics, including leadership, innovation, community service, athletics, or the arts. These awards acknowledge



individuals whose talents, contributions, and dedication have created a meaningful impact and inspired others.

Eligibility is subject to appropriate verification and/or trials.

## Scholarship Eligibility and Award Process

To help you make informed decisions, here's a clear overview of how scholarships are awarded, continued, and administered at Illinois Tech Mumbai.

### Eligibility, Continuation, and Disqualification

- Scholarships are open only to duly admitted students of the university.
- All applicants must submit complete and verifiable documentation by the stipulated deadline.
- Failure to provide authentic documentation or providing false/misleading information, shall lead to disqualification and revocation of any scholarship and admission offer.
- Recipients must maintain academic and disciplinary standards as prescribed; violation may result in withdrawal of benefits and other disciplinary action.
- Scholarships granted on admission may be renewed annually, subject to the student maintaining good academic standing (e.g., cumulative GPA of 3.0/4.0), good conduct, and attendance as defined by the university.
- The university's scholarships cannot be combined with any other scholarships or financial aid.

### Quantum and Tenure

- Scholarships may be granted as a fixed amount or as a percentage waiver of tuition fees, and in exceptional cases may extend to residence, meals, or stipends.
- Unless otherwise specified, scholarships are valid for one academic year and renewable subject to compliance with continuation criteria.
- The university reserves the right to cap the number of scholarships awarded per category in a given academic year.

### Application and Selection Process

- **Announcement:** Scholarship details, including categories, eligibility, deadlines, and application procedures, will be published in the admission prospectus and on the university's website.
- **Application**
  - All applicants are considered for merit-based and special scholarships. No additional application is necessary.
  - The application process for need-based scholarships requires submitting a completed scholarship application form along with proof of financial need, such as family income documents and tax return forms, by the application submission deadline.
- **Verification:** Academic, financial, and achievement credentials will be independently verified.
- **Selection and Approval:** A Scholarship Committee, constituted by the university, will review applications and award the scholarships.
- **Notification:** Successful applicants will be issued award letters along with their admission offer letter, with clear terms and conditions.

### Disbursement

- Scholarships are ordinarily adjusted against tuition fee invoices.
- First-year admission scholarships are confirmed only after verification of original documents.
- Disbursement is subject to continued full-time enrollment in good academic standing and compliance with our policies.

### Transparency and Accountability

- Details of scholarships awarded are recorded and maintained by the university.
- Aggregate data may be published annually for transparency.
- The Scholarship Committee will ensure compliance with internal governance processes and external audit requirements.

### Compliance

- This framework is framed in alignment with UGC regulations.
- Any amendments required by law, regulation, or the university's policy will be incorporated as and when applicable.
- The university reserves the right to review and revise the scholarship offerings periodically, subject to regulatory approval.

*These scholarship guidelines will apply from academic year 2026–27. They will be reviewed every three years, or earlier if required by law or relevant governance bodies.*

## Refund Policy for Academic Year 2026–27

Illinois Tech Mumbai is committed to ensuring transparency, fairness, and student welfare in all financial matters. This Refund and Fee Policy for the academic year 2026–27 has been framed in accordance with the University Grants Commission (UGC) Notification on Fee Refund and Non-Retention of Original Certificates (2024).

### Application Fee

The application fee is non-refundable under any circumstances.

Applicants are advised to verify eligibility criteria, program details, and deadlines prior to making payment.

### Tuition Fee and Refund Policy

The refund of tuition and other fees upon withdrawal of admission shall be governed by the timelines specified below, as per UGC 2024 guidelines and the university's best practices.

<b>Time of Withdrawal of Admission</b>	<b>Percentage of Refund of Fees</b>
15 days or more before the formally notified last date of admission	100% (after deduction of an amount not more than 5% of the fees paid by the student, subject to a maximum of INR 1,000)
Within 15 days before the formally notified last date of admission	90%
Within 15 days after the formally notified last date of admission	80%
Between 16 and 30 days after the formally notified last date of admission	50%
After 30 days from the formally notified last date of admission	No refund
<i>Last date of admission will be the same as the Last Day to Add/Drop Courses (please refer to the Academic Calendar)</i>	

In cases where a student has been granted a scholarship or fee waiver and subsequently withdraws, the refundable amount shall be calculated after adjusting such concessions.

All eligible refunds will be processed within 15 working days from the date of receipt of a complete withdrawal application. Refunds shall be processed only after the student submits a duly signed withdrawal request along with necessary documentation.

**Admission Fees**

The admission fee (deposit) paid by the student at the time of confirming admission shall be refundable on cancellation of admission by the student.

**Exceptional Circumstances**

In the event of withdrawal due to medical emergencies, visa denials, natural calamity, or government order, the university may, at its discretion, consider additional partial refunds upon submission of valid supporting documents and approval by the COO.

**Grievance Mechanism**

Any concerns or disputes related to fee refunds or financial matters shall be submitted in writing to Student Accounts, which will serve as the primary authority for reviewing and resolving such cases.

The university shall ensure that all grievances are addressed in a fair, transparent, and time-bound manner in accordance with the university’s internal procedures. All such grievances shall be resolved within 30 working days from the date of receipt.

**Policy Review and Amendments**

The university reserves the right to review and amend this policy annually or as required by changes in UGC or government regulations. All such amendments will be published on the official university website.



**Apply today:** [www.iit.edu/mumbai/apply](http://www.iit.edu/mumbai/apply)

**For queries, email:** [mumbai-admissions@illinoistech.edu](mailto:mumbai-admissions@illinoistech.edu)

**Learn more:** [www.iit.edu/mumbai](http://www.iit.edu/mumbai)

**Contact us:** +91 7996112121

Stay connected



**ILLINOIS  
TECH  
MUMBAI**

Valid as of March 2026.  
Information is subject to change at the discretion of the university.