

Installing HP Plotter on MacOS

This document explains the process of installing the HP DesignJet Z6200 plotter on your MacOS based computer. This is four-step process as outlined below:

1. Download HP DesignJet Z6200 Plotter Driver
2. Install HP DesignJet Z6200 Plotter Driver
3. Install Plotter
4. Printing to Plotter

Download HP DesignJet Z6200 Plotter Driver

The HP driver can be downloaded directly from HP website from

https://otsi.iit.edu/software/executeable/papercut/Mac_OS_X_HP_DesignJet_PostScript_Driver.dmg

Click the above link to download the file and save it on your MacOS computer.

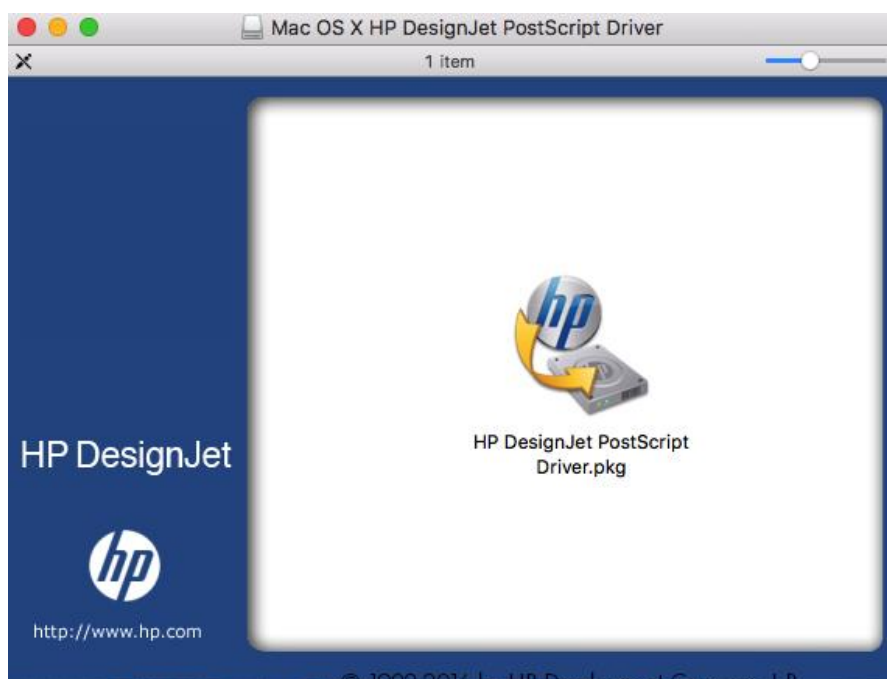
Install HP DesignJet Z6200 Plotter Driver

Follow the below steps to install the HP plotter driver

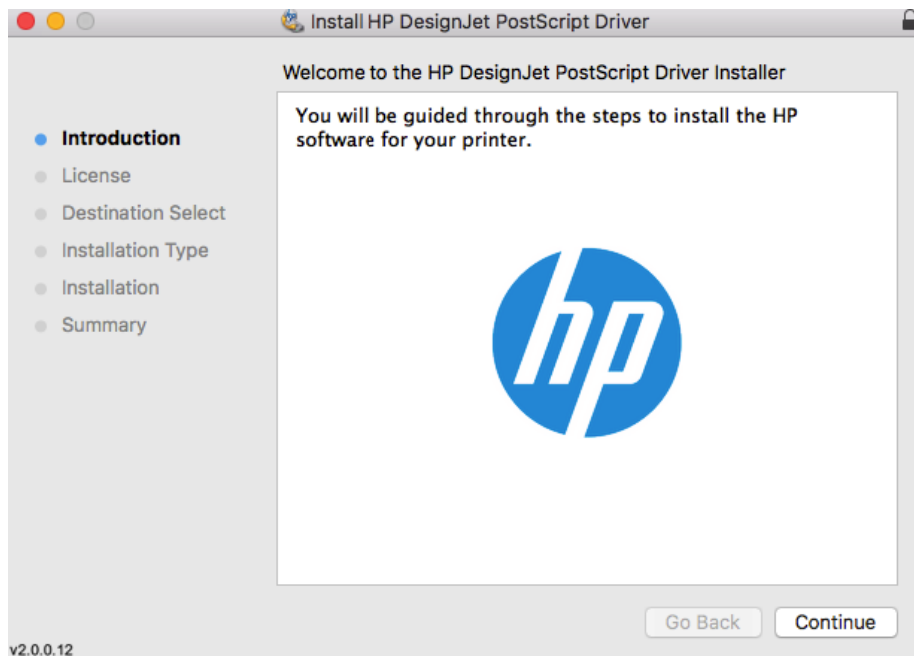
1. Double click the downloaded Mac_OS_X_HP_DesignJet_PostScript_Driver.dmg file to mount it



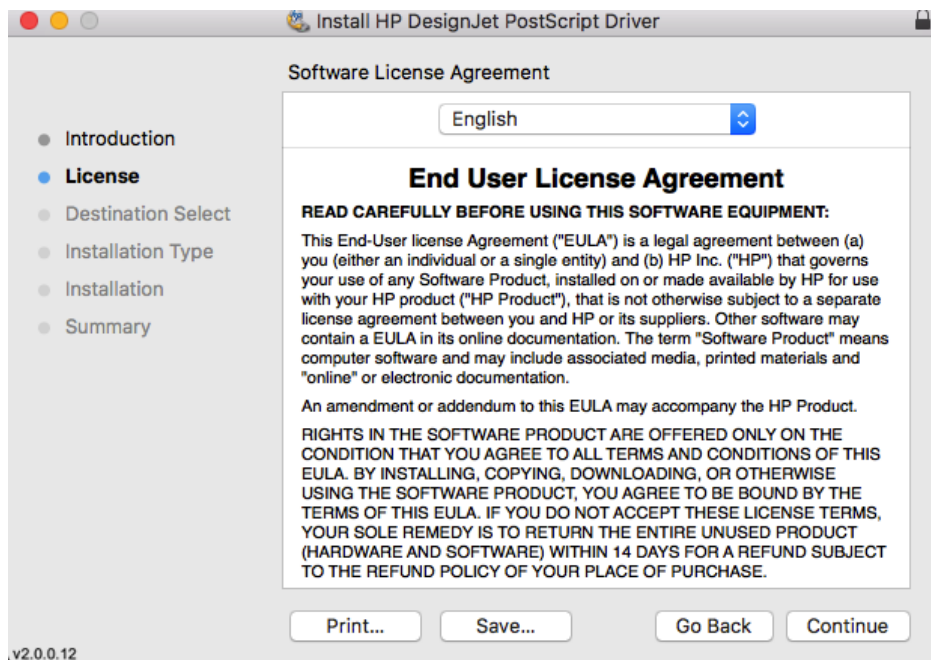
2. Double click to open the mounted "Mac_OS_X_HP_DesignJet_PostScript_Driver.dmg" disk image



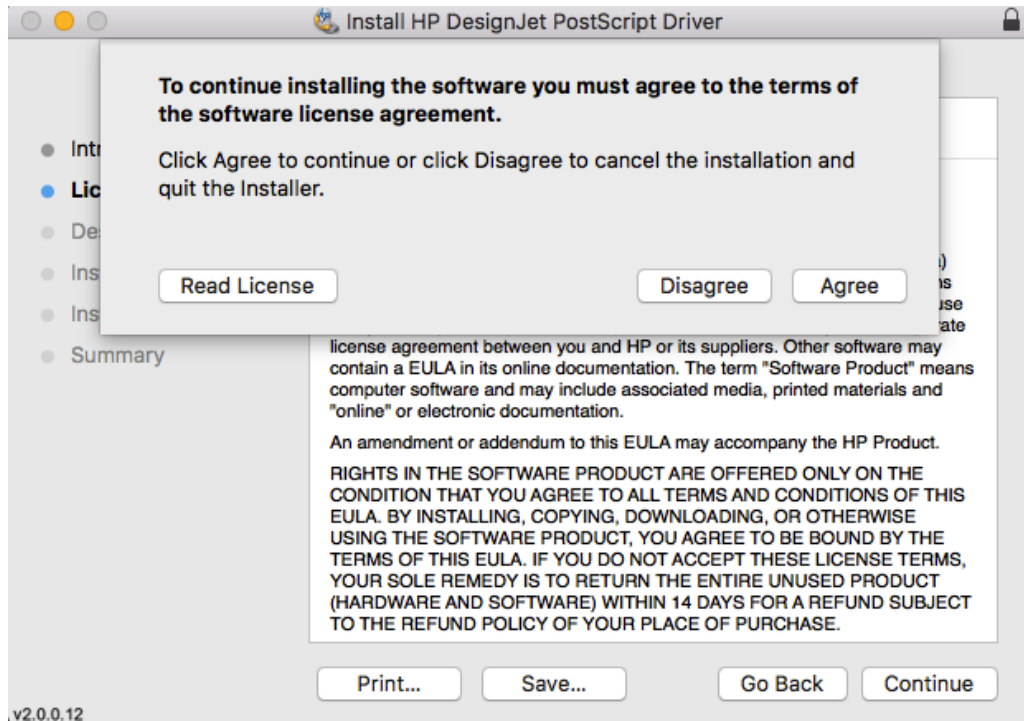
3. Now double click to run the “HP DesignJet PostScript Driver.pkg” file to start the driver installation and click “Continue”



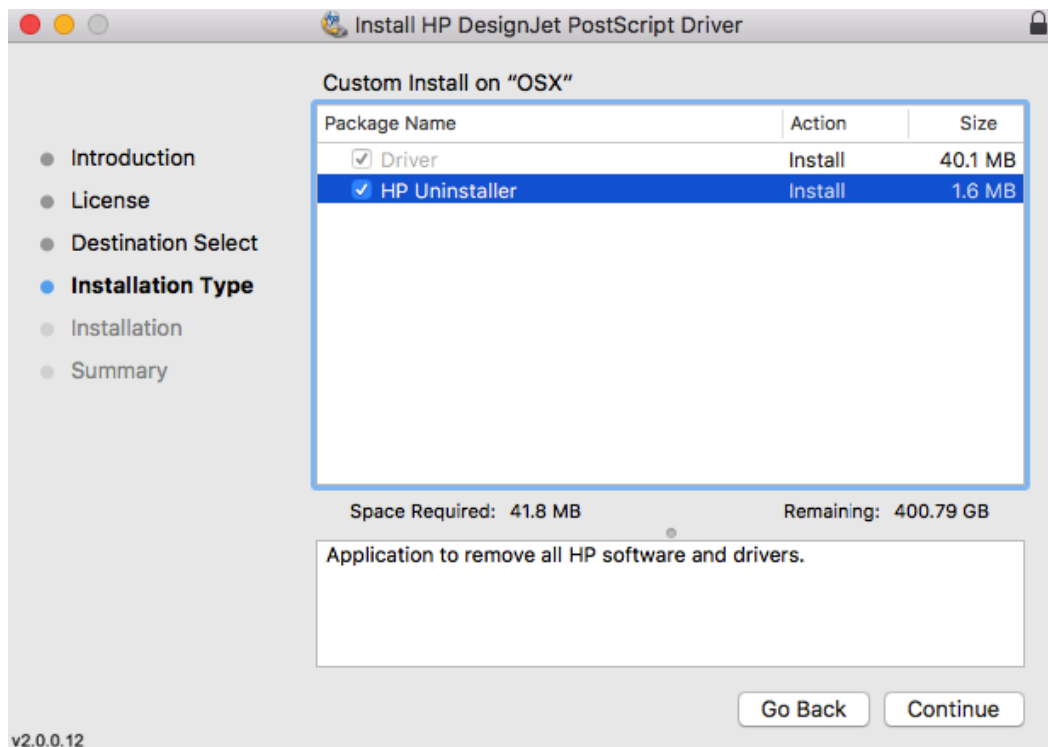
4. If you accept the End User License Agreement, click “Continue”



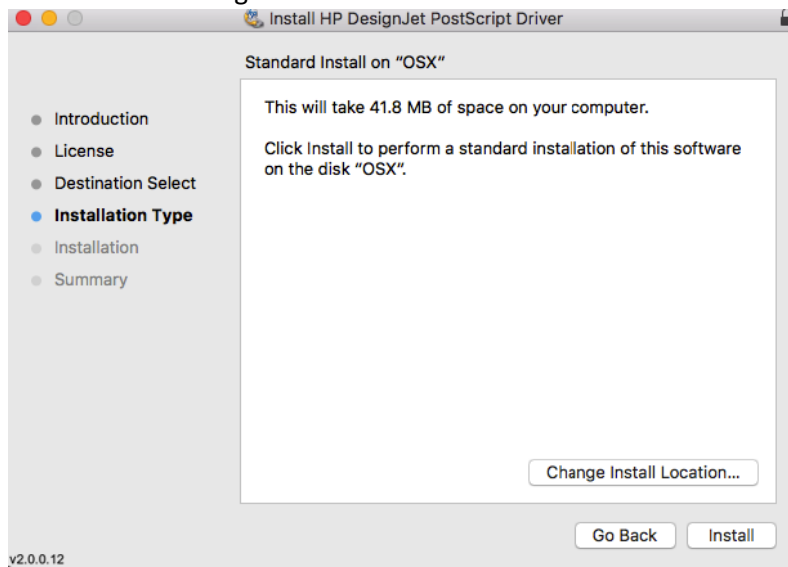
5. If you accept the End User License Agreement, click “Agree”



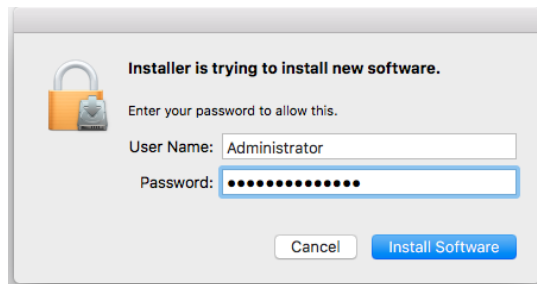
6. If you like, check “HP Uninstaller” and click “Continue”



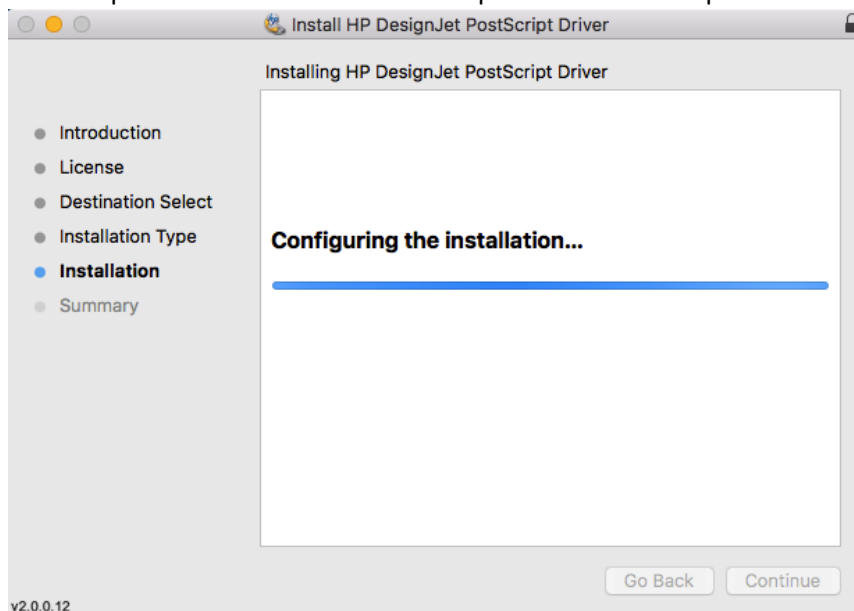
7. Click "Install" to begin installation.

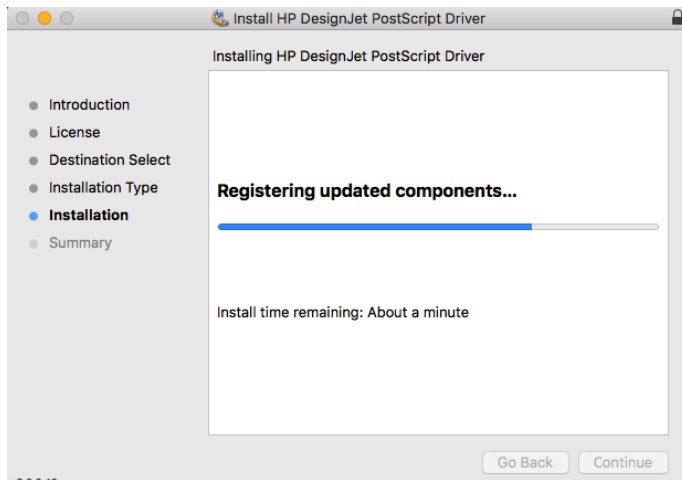


8. You will be asked for your Administrator account password. Please type your administrator account credentials and click "Install Software"

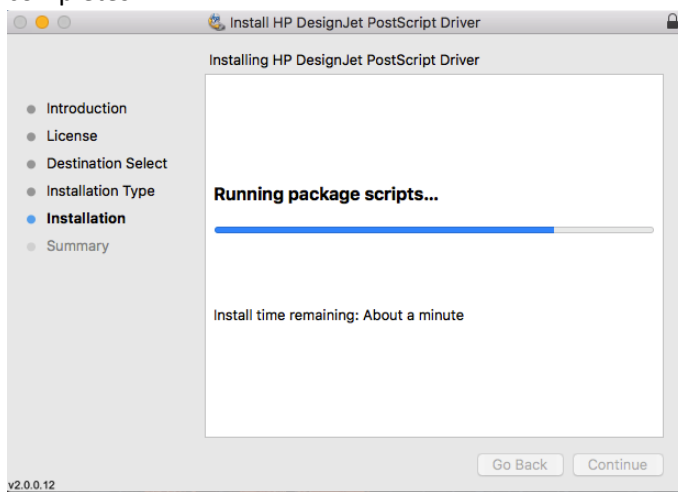


9. The setup will now continue. Please be patient until it completes.

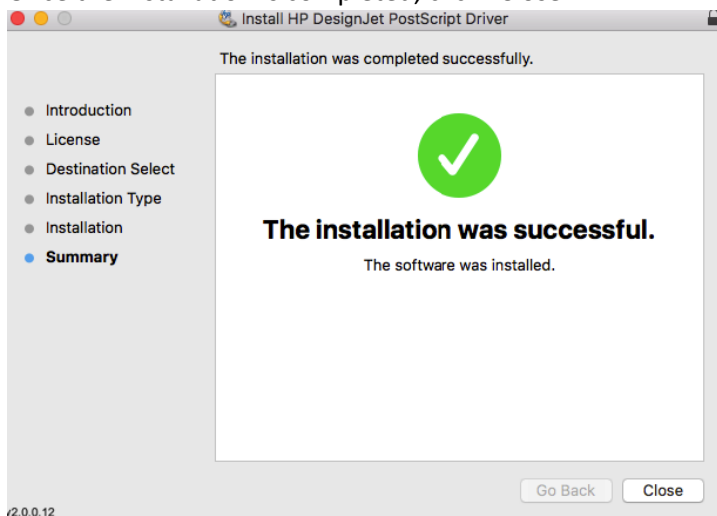




10. The installer will take some time during the “Running package scripts” phase, please wait until it completes.



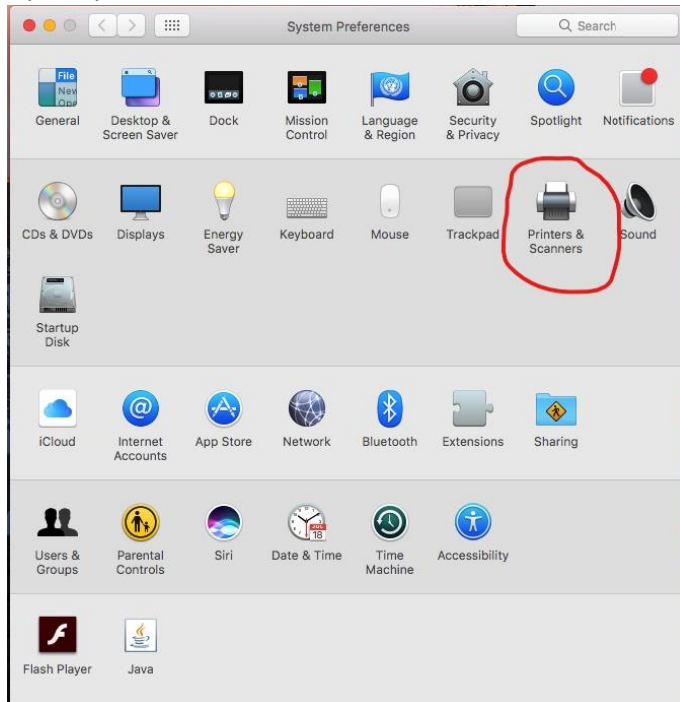
11. Once the installation is completed, click “Close”



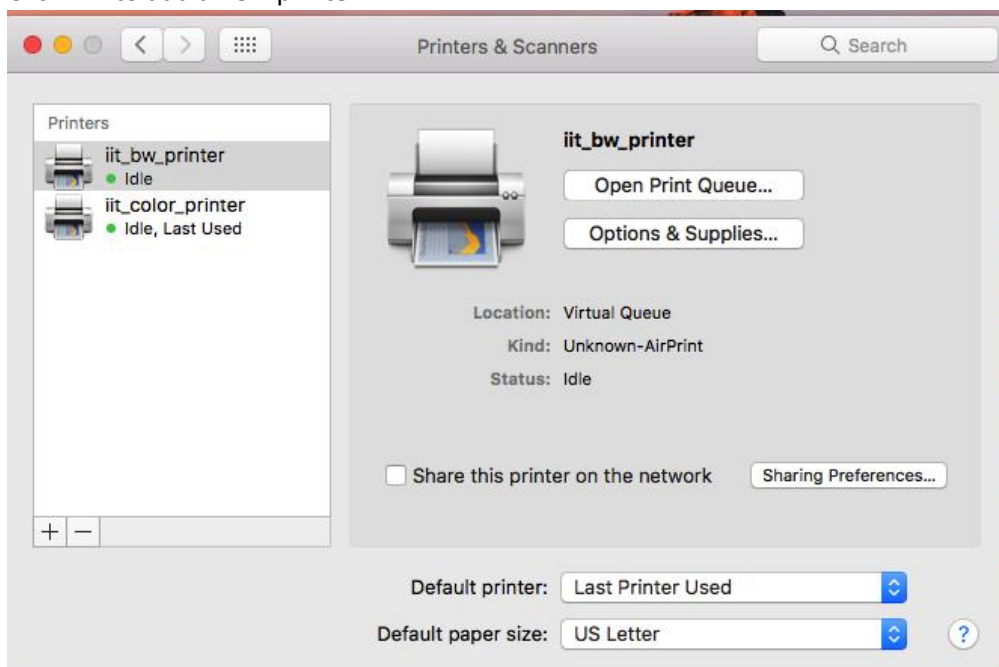
Install Plotter

Follow the below steps to install the HP plotter

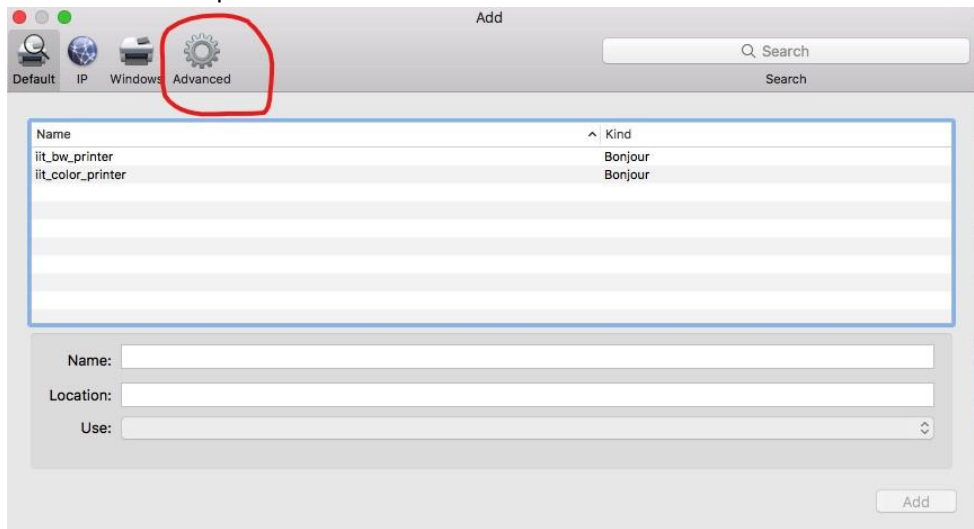
1. Open System Preferences and click on "Printer & Scanners"



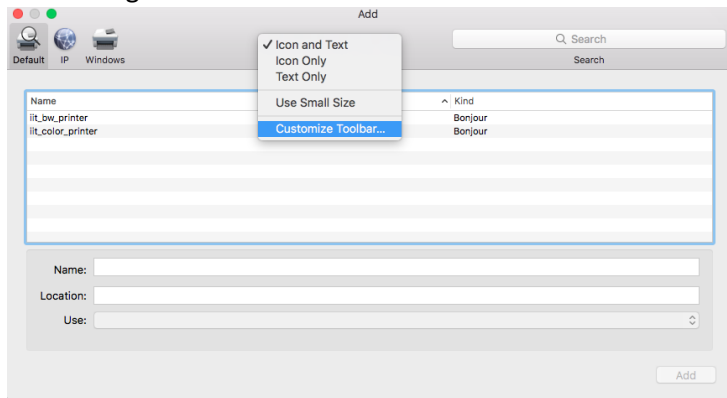
2. Click "+" to add a new printer



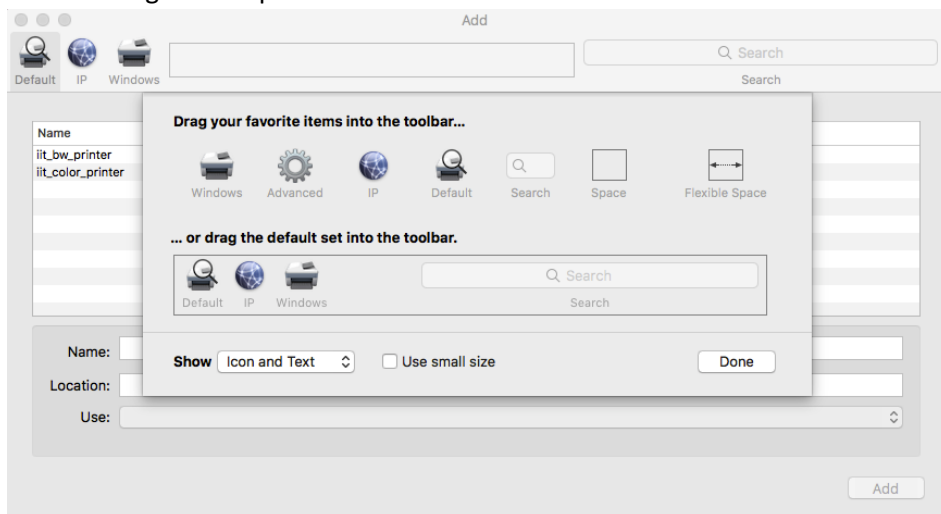
3. If the Advanced option is not available



a. Right click and choose "Customize Toolbar..."

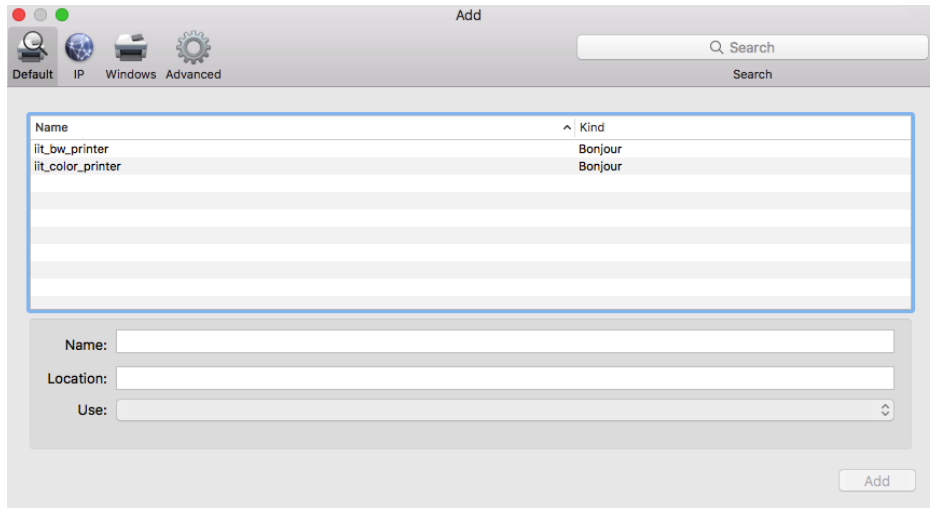


b. Drag and drop the "Advanced" icon on the toolbar

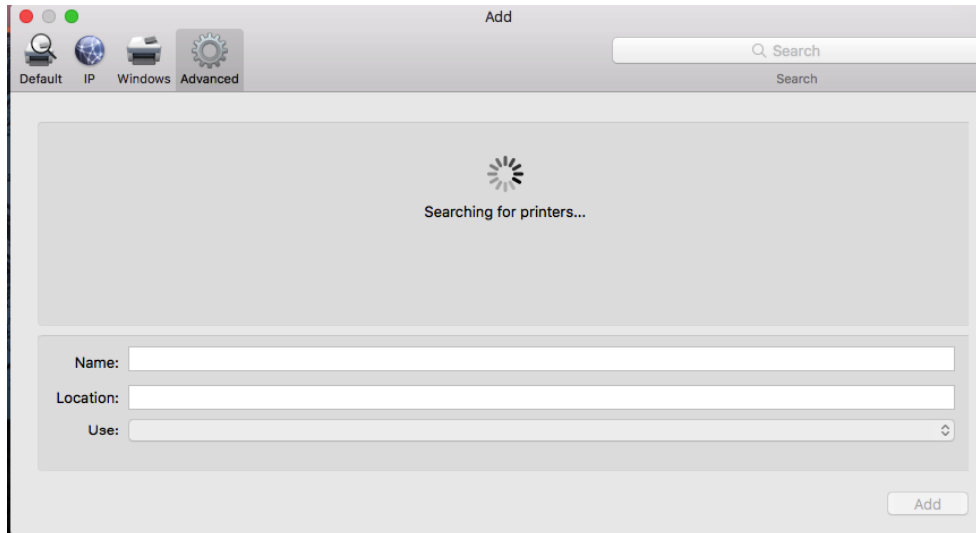


c. Click "Done"

4. Click “Advanced”



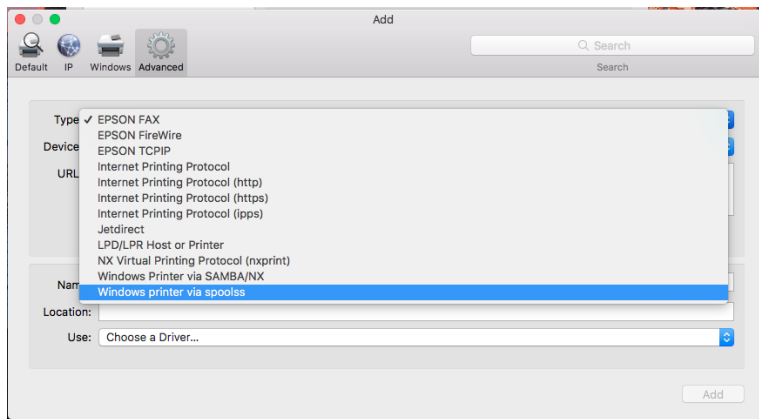
5. Your MacOS will try to search for printers, once the search completes Add a printer manually



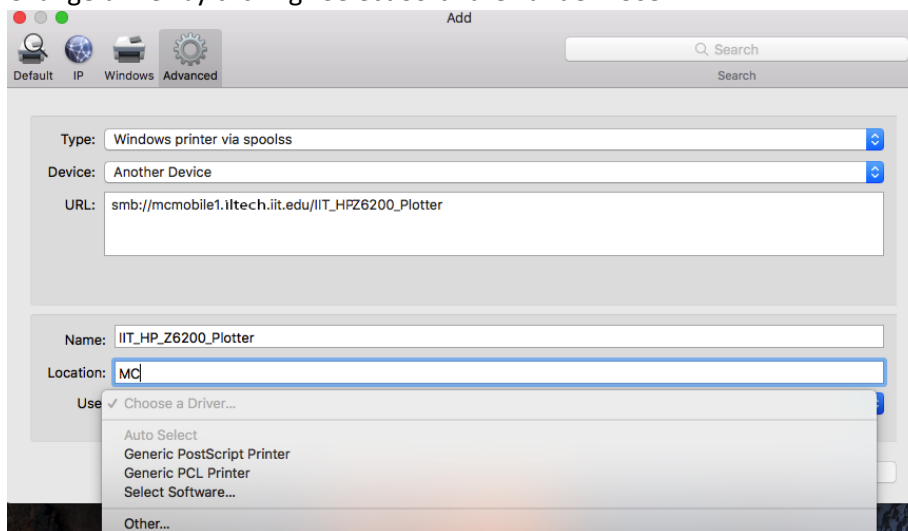
6. Choose below settings

Type	Windows printer via spoolss
URL	smb://mcmobile1.iltech.iit.edu/IIT_HPZ6200_Plotter
Name	iit_hpz6200_plotter
Location	MC
Use	HP Designjet Z6200 42in Photo

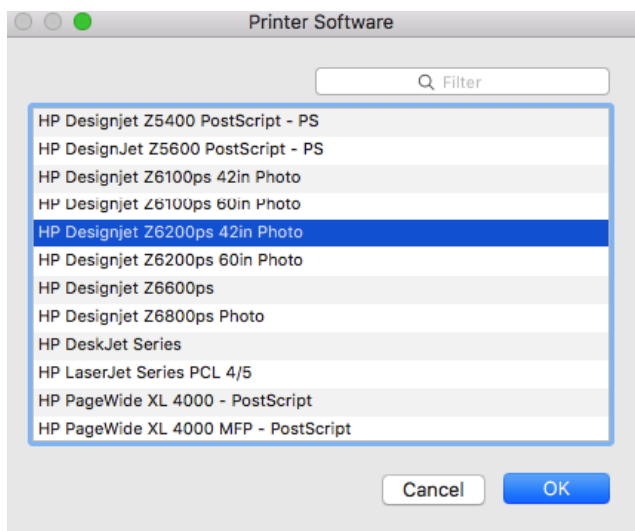
Choose “Type” “Windows printer via spoolss”



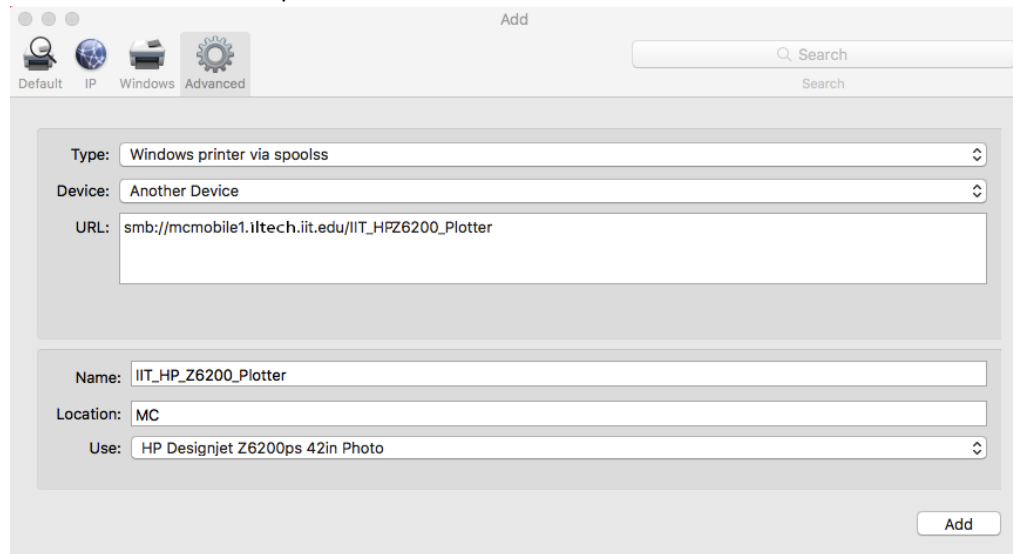
Change driver by clicking “Select Software” under “Use”



Choose “HP DesignJet Z6200ps 42in Photo” driver and click “OK”



Click “Add” to add the plotter

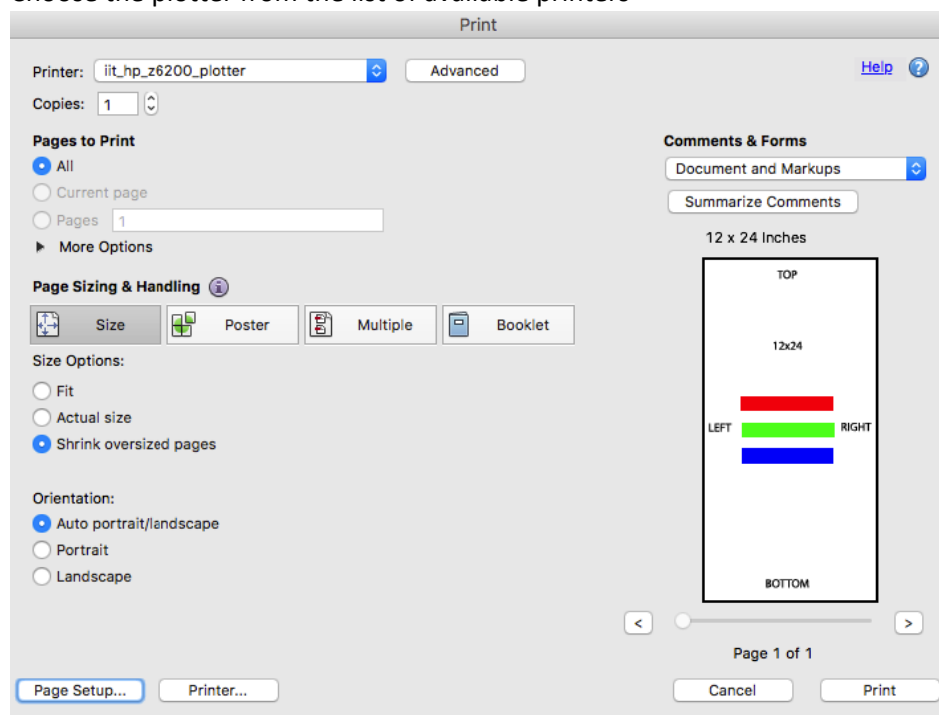


7. The plotter will now be installed on your MacOS

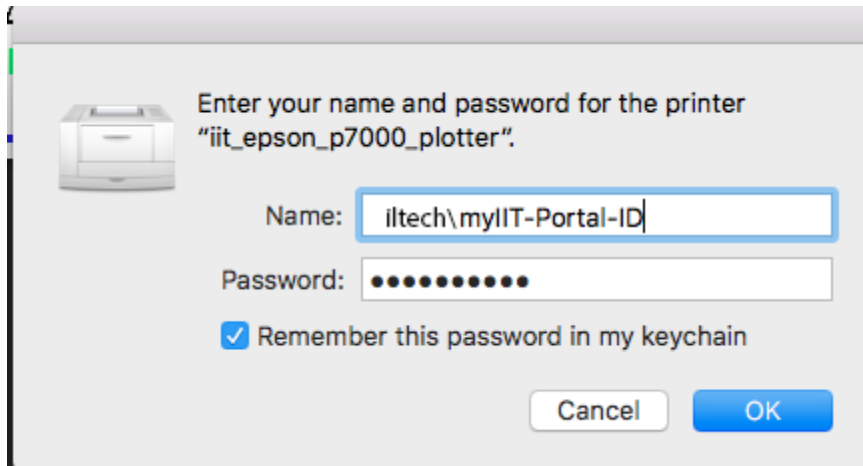
Printing to Plotter

Once the plotter is installed you will be asked to provide your myIIT credentials when sending a print job. Follow the below steps to send a print job to the HP plotter

1. Open your file you will like to plot. We recommend using PDF files as image processing application can generate large sized files that could cause issues with plotting.
2. Choose the plotter from the list of available printers



3. Set the job dimensions and click "Print"
4. You will be asked to authenticate with your ILTECH active directory account. Enter your myIIT portal credentials.
If your myIIT portal id is jdoe, type ILTECH\jdoe in the "Name" field and type your myIIT portal password in the "Password:" field



5. Your job will now be queued within the printing system. To release your job use the Hawki Mobile App or go to <https://print.iit.edu>.